



High Airflow Applications Multibarrel Filters "MBF" Series

APPLICATIONS & EQUIPMENT

- Industrial & Severe Duty
- Centralized Air Intakes
- Centrifugal Blowers
- Piston Compressors
- Screw Compressors
- Centrifugal Compressors
- Fans
- Food Industry
- Pneumatic Conveying
- Factory Air
- Waste Water Aeration
- Cement
- Power Plants

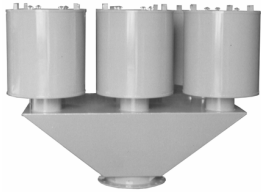
FEATURES & SPECIFICATIONS

- Cartridge style filter design for space restricted work areas while still handling large air flows.
- Lower pressure drop is achieved with single barrel design
- Durable carbon steel construction with baked enamel gray finish
- Multiple flange connections available
- FS Series Models: Tubular silencing design is positioned to maximize attenuation and air flow while minimizing pressure drop
- Temp (continuous): min -26°C (-15°F) max 104°C (220°F)
- Filter change out differential: 255-380 mm H₂O over initial delta P

OPTIONS (Inquiries Encouraged)

- 1/8" tap holes
- Pressure Drop Indicator
- Available in **Stainless Steel**
- Epoxy coated housings
- Various media
- FS, F, FT, MBF series styles

CONFIGURATION

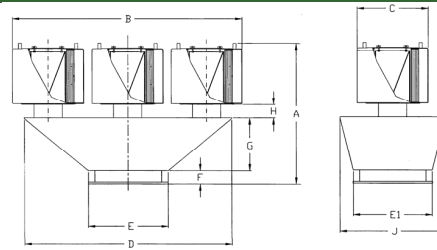


Bottom Outlet



Side Outlet

DRAWING



Dimension tolerance ± 6 mm

I = Industrial Duty S = Severe Duty

	with Polyester Element	Flange Outlet	DIMENSIONS - inches									Rated Flow SCFM	Approx. Wt. lbs
			A	B	C	D	E & E1	F	G	H	J		
E	MBF2B-485P-1400F	14"	45	61	28 1/2	48	22	4	10	6	22	5200	510
S	MBF2B-685P-1600F	16"	52	61	28 1/2	48	22	4	10	6	22	6800	600
S	MBF2B-485P(2)-1800F	18"	67	61	28 1/2	48	22	4	10	6	22	8800	625
S	MBF4B-685P-2000F	20"	52	61	61	48	30	4	10	6	48	11000	1100
S	MBF4B-685P-2200F	22"	52	61	61	48	30	4	10	6	48	13500	1150
S	MBF4B-485P(2)-2400F	24"	67	61	61	48	30	4	10	6	48	16000	1300
S	MBF6B-685P-2600F	26"	66	93 1/2	61	80	36	4	24	6	48	18800	1650
S	MBF6B-685P-2800F	28"	66	93 1/2	61	80	36	4	24	6	48	21000	1750
S	MBF6B-485P(2)-3000F	30"	81	93 1/2	61	80	36	4	24	6	48	25000	1850
Paper Element Models													
E	MBF2B-484P-1400F	14"	45	61	28 1/2	48	22	6	10	6	22	5200	510
S	MBF2B-484P-1600F	16"	45	61	28 1/2	48	22	6	10	6	22	6800	550
S	MBF2B-384P(2)-1800F	18"	52	61	28 1/2	48	22	6	10	6	22	8800	600
S	MBF4B-384P-2000F	20"	37	61	61	48	30	6	10	6	48	11000	975
S	MBF4B-484P-2200F	22"	45	61	61	48	30	6	10	6	48	13500	1000
S	MBF4B-484P-2400F	24"	45	61	61	48	30	6	10	6	48	16000	1150
S	MBF6B-484P-2600F	26"	59	61	61	48	30	6	24	6	48	18800	1300
S	MBF6B-484P-2800F	28"	59	93 1/2	61	80	36	6	24	6	48	21000	1550
S	MBF6B-484P-3000F	30"	59	93 1/2	61	80	36	6	24	6	48	25000	1700

SPECIALS

